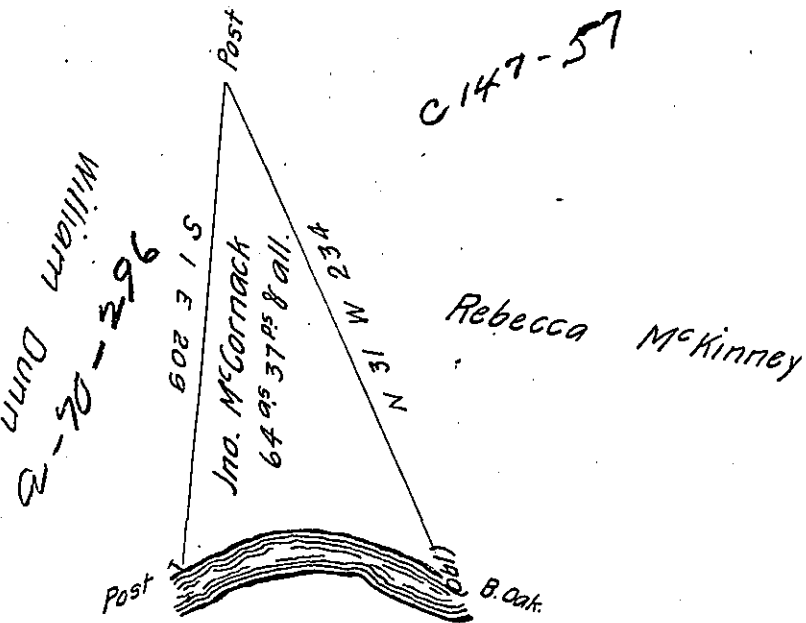


The Courses & distances
down the River from the
Post to the Black Oak
are as follows -

N	59	E	33
N	79	E	32
S	85	E	20
S	64	E	27
S	84	E	13 to B.O.
			<u>125.</u>



Situate on the North side of the West branch of the river
Susquehanna opposite to the Big Island in Pine creek Township,
Lyorning County containing Sixty four Acres & Thirty seven Perches
& the usual allowance for roads &c. Surveyed the 21st day of the
4th month 1798 for John McCormack in pursuance of a Warr-
ant dated the 9th day of June 1786.

N^o 787.

William Ellis D. S.

To ~~Deputy~~ Brodhead Esqr. Surveyor General.

IN TESTIMONY that the above is a copy of the original remaining on file in
the Department of Internal Affairs of Pennsylvania, made
conformably to an Act of Assembly approved the 16th day of
February, 1833, I have hereunto set my Hand and caused
the Seal of said Department to be affixed at Harrisburg,
this twenty eighth day of November 1905.

Isaac R. Brown
Secretary of Internal Affairs.